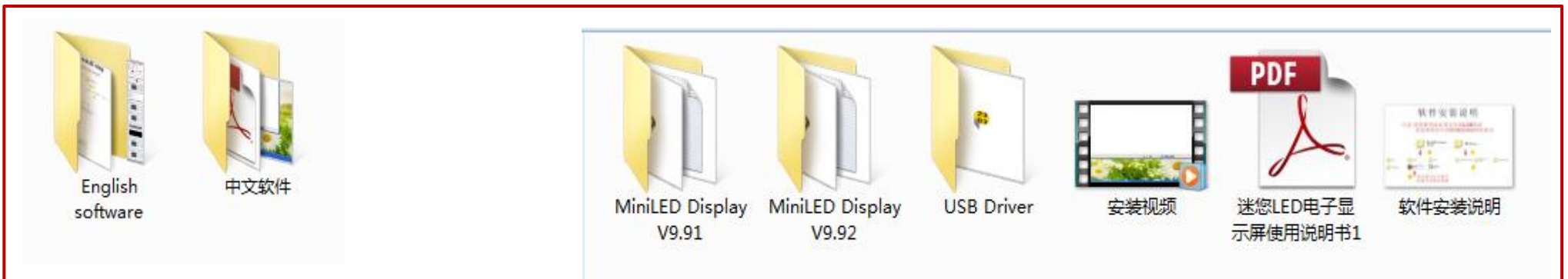


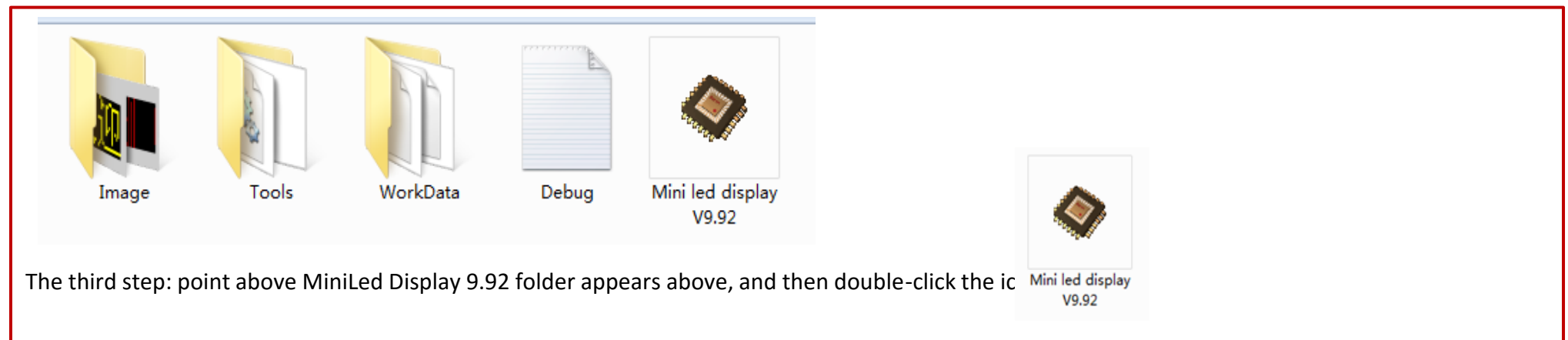
Version 9.92 software operating instructions

First, welcome you choose to use our conventional LED display, with the following four-character badges as an example specific steps:

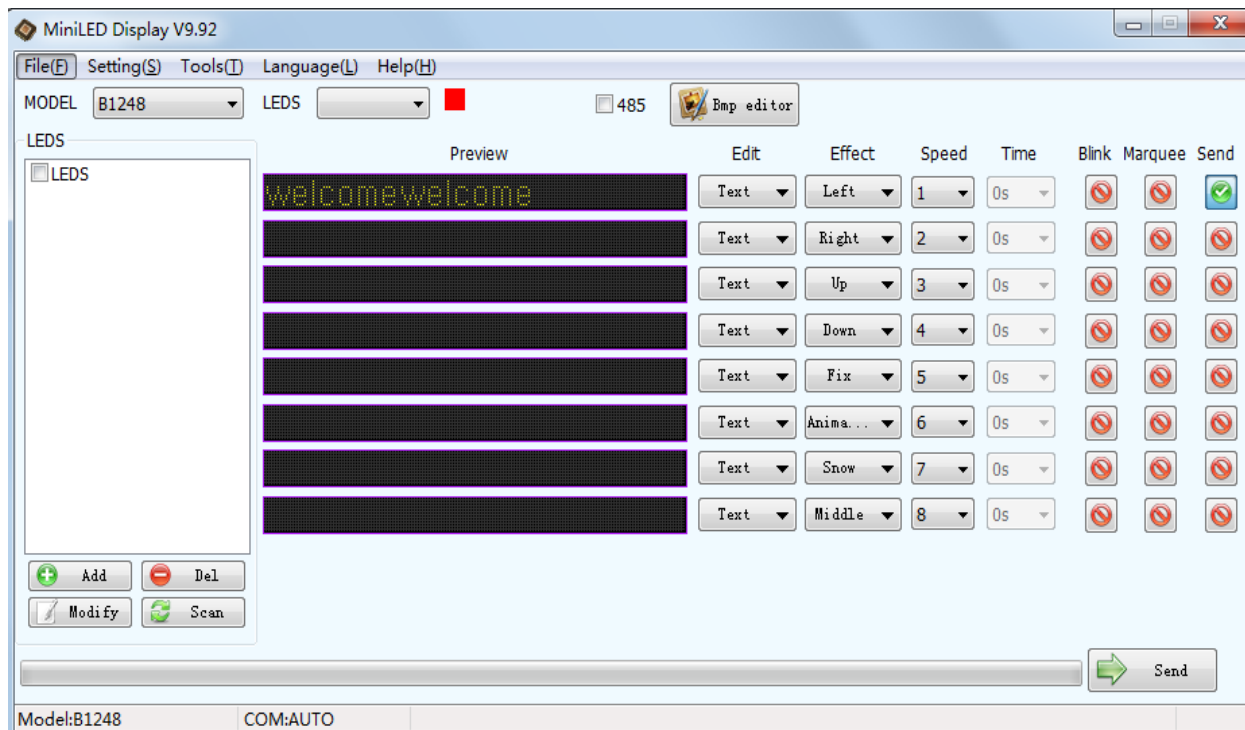
The first step: the little disc copy all data files to the new desktop folder, and then come up with the disc; not belt disc operations;



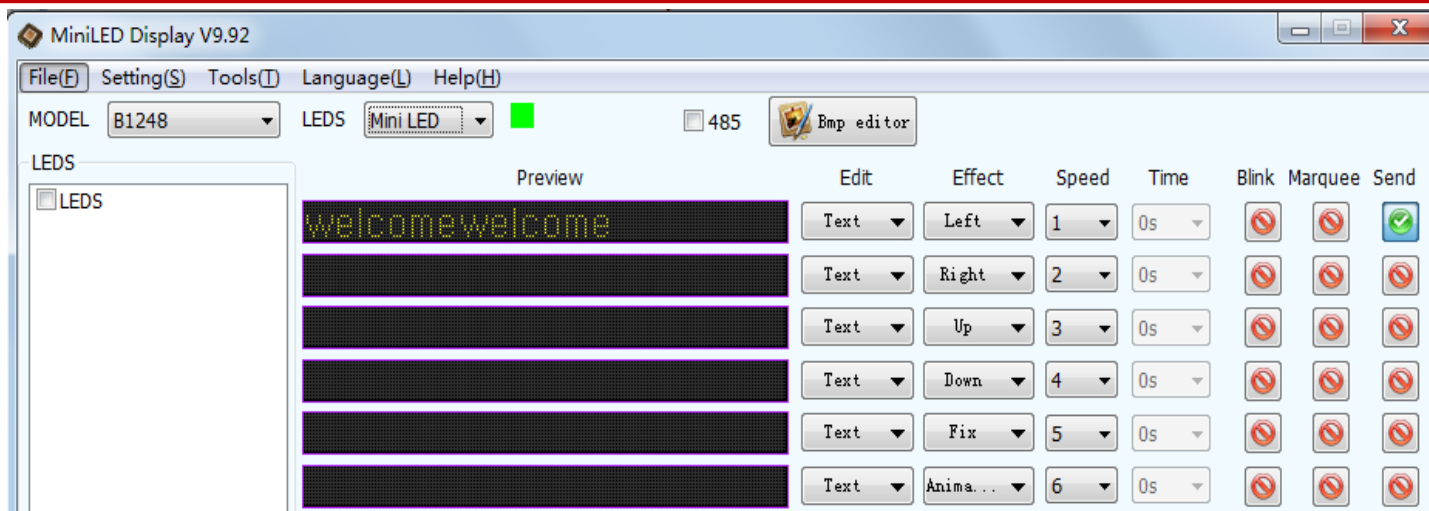
Step two: opening the Chinese soft-folder will appear to the right content,

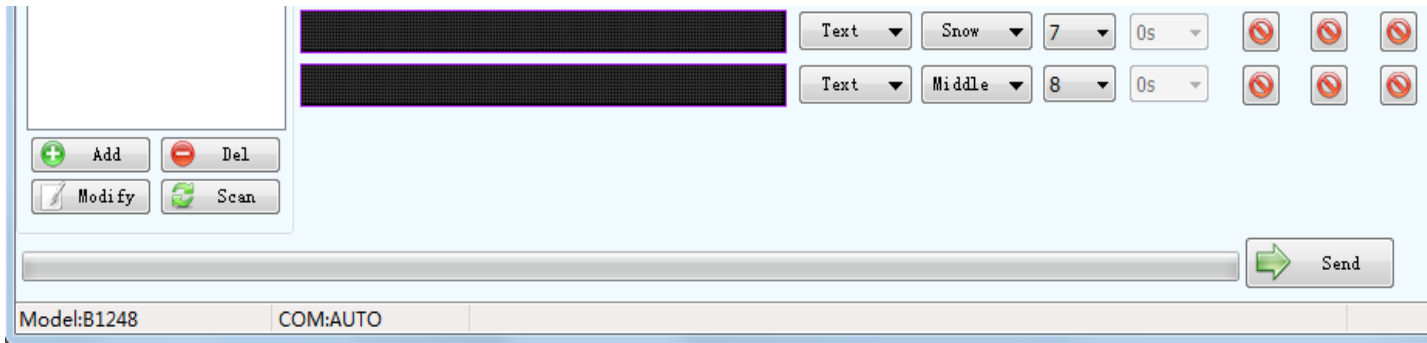


The third step: point above MiniLed Display 9.92 folder appears above, and then double-click the ic



Step four: the emergence of this interface, MODEL can choose the model (badge and patch panel are all white box on the right side of the model sticker subject), language bar can select the appropriate language, do not choose animation effects, digital time the greater the faster; blink and marquee selection based on need;





Step five: Turn off the computer antivirus software and all guards, connect the computer with a data cable and badges, red blocks block turns green, indicating a successful connection, such as a green block does not appear, reconnect the plug pulled out under the badge of the line ;

Step Six: Edit the text in point interface, interface appears as follows:

The software comes with pictures to choose from,

From left: The first column font: text WIN7 / 8 System Options MingLiu, other system options italicized; alphabetical selected font Dotum; other languages, select the appropriate font;

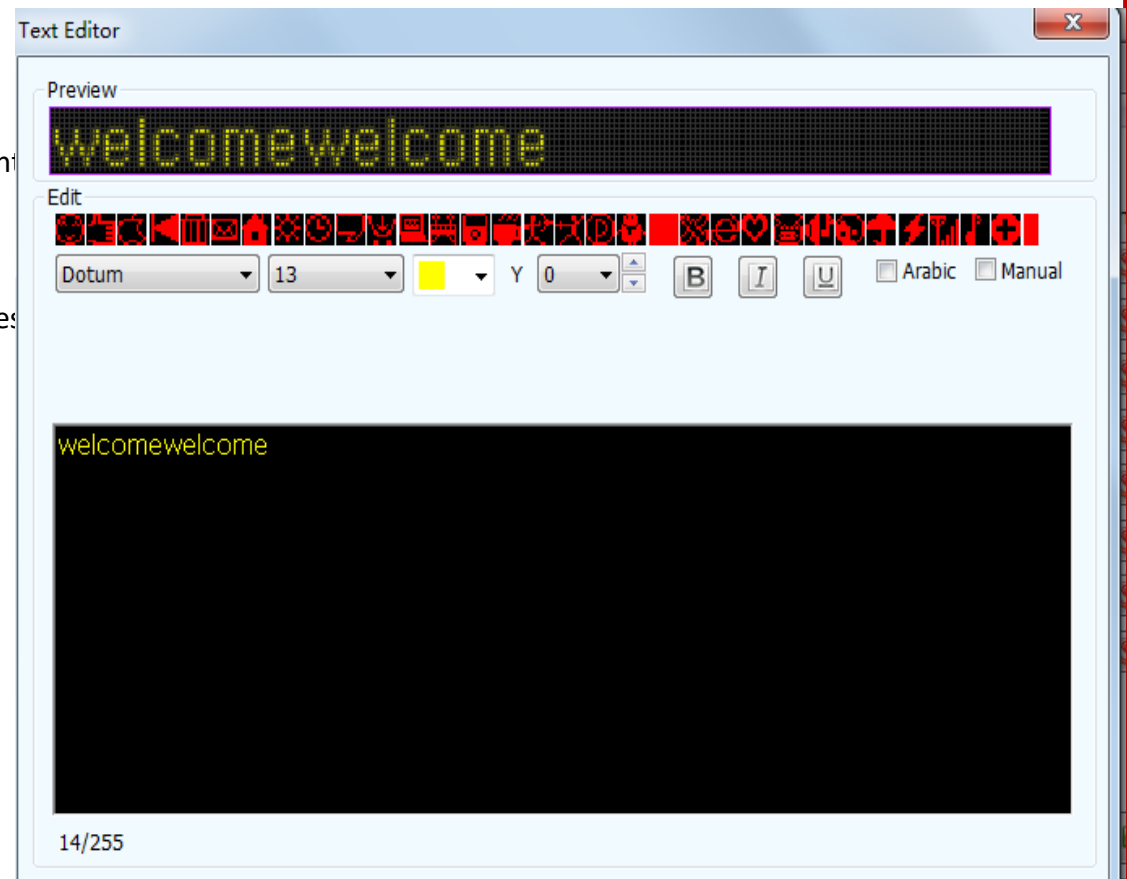
The second column is the font size, the text in general is No. 12, the English word Mother selected depending on the circumstances given size;

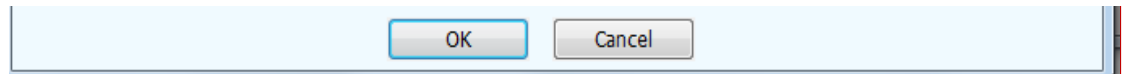
The third yellow font color, this ignore it;

The fourth up and down arrows to adjust the font to move up and down;

Arabic represents Arabic, Manual represents Manual, these two Do not choose; B, I, U and OFFICE table is the same function;

Edited content determined point on the line;



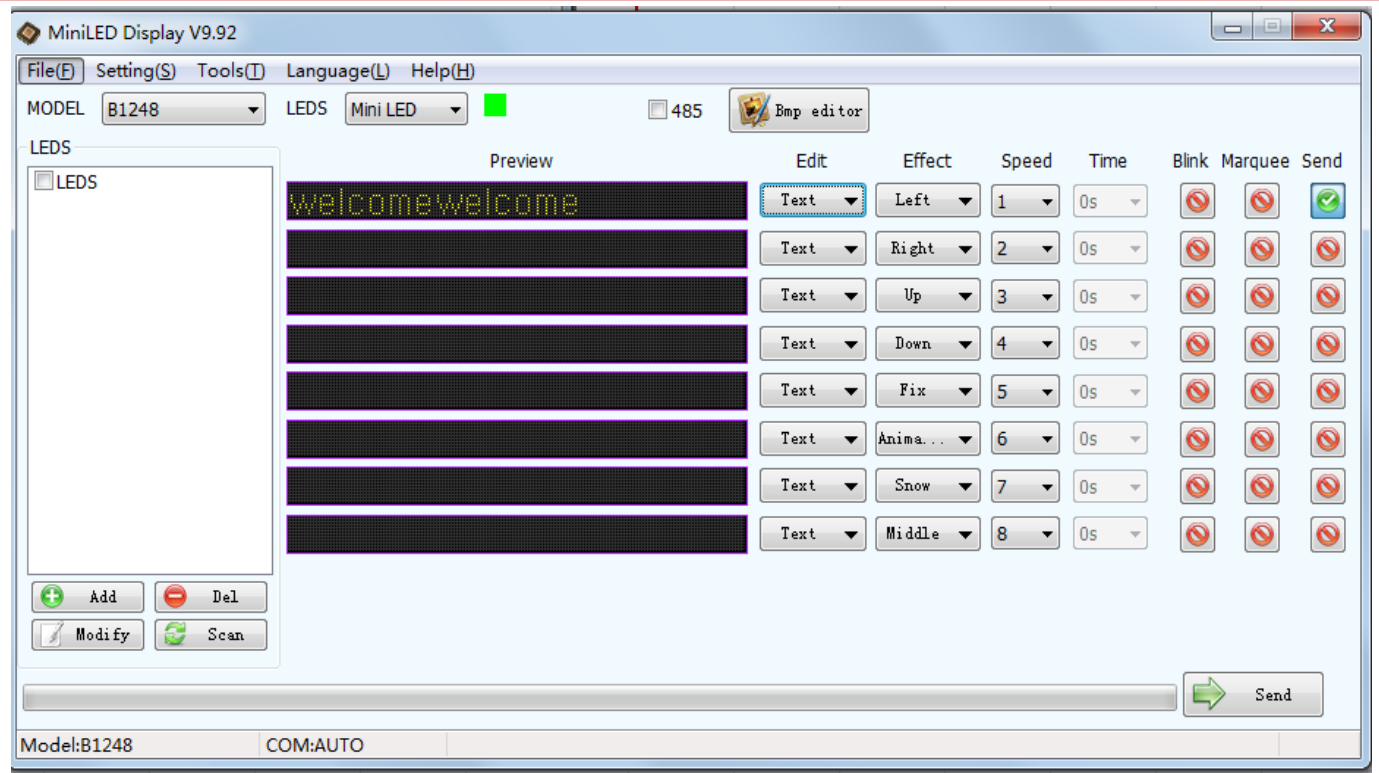


Step Seven: click OK to return to the main interface:

"Send Data", you can send the information,

See if badges scrolling content changes;

Need to change or send multiple messages, Repeat the above action.



Step eight: Select brightness: the back there is a badge with sun icon buttons to adjust the brightness: 25%, 50%, 75%, 100% of the total of four, different brightness of different standby time, can choose a minimum of 8 hours 50% above, the brighter the brightness using the shorter time; LED display is bright SMD lamp beads, no need to choose a high brightness; CD-ROM also has a corresponding illustrated.

Step 9: Information regulation: There is a badge on the back with two intersecting rectangular icon buttons, adjustable information; press M1 to display only the first piece of information, according to M2 show only the second creed, and so on , according to the M1-8 represents wheel roller player first to eighth pieces of information;

Step 10: Charging: 1, the charging LED display brightness adjustment 25%, and the charging icon shows the power, charging 4-6 hours, full line; power is less than 10% shall be charged; 2, do not charge status: surface front of the screen, pull up the power switch is battery-powered, pulling down is to turn off the power; charging status: the power switch upward pull is charging and will display the charging icon, pull down the external power supply;